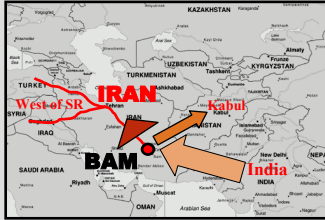


3Dimensional Reconstitution and Virtual Reality of World Heritage in Danger, Knowledge management of Bam and its Cultural Landscape

E.ANDAROODI, K. ONO, A. Kitamoto, T. Kawai, A. Einifar, E. Mokhtari, C. Adle

Contact: elham@nii.ac.jp

National Institute of Informatics, Iranian Cultural Heritage and Tourism Organization, Waseda University, University of Tehran, IFCA



(photo credit by ICHTO)



(photo credit by Digital Globe)



(photo credit by ICHTO)



Governor part and common part of the citadel, view from the entrance gate, barrack, stable and governor house, main gate of citadel of Bam

Bam city in Iran:

An important point, Connecting India to Kabul, Iran and west of Silk Roads

Citadel of Bam, 200000 m2 of mud brick structure date to 2000 BC till 1900 AD, a small city with rich typology and various kinds of buildings and districts

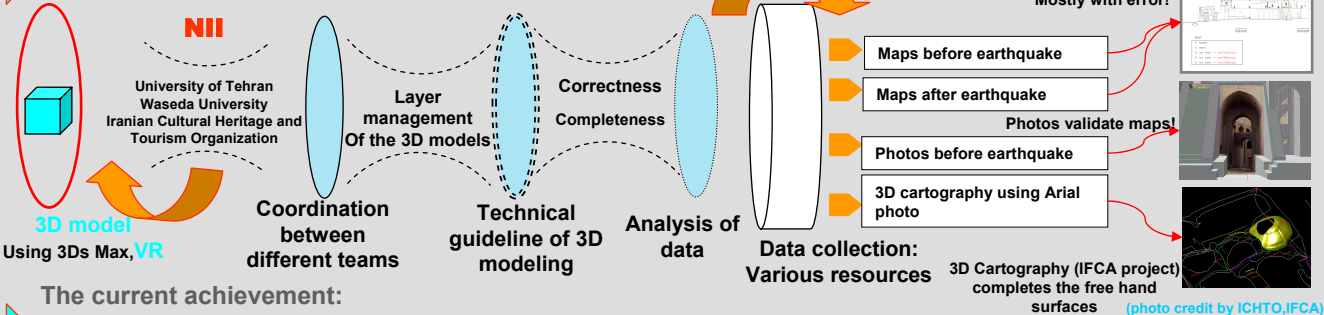
Earthquake

happened in 26 Dec. 2003, More than 80% destruction

Bam and its Cultural landscape registered in UNESCO World Heritage in Danger in July 2004



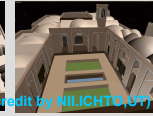
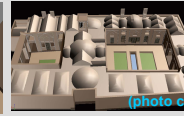
The Process of the project



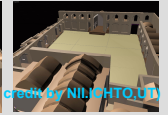
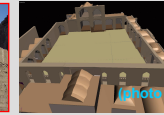
The current achievement:

3D models

Photo after earth quake and the 3D model

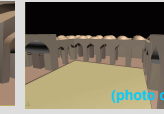
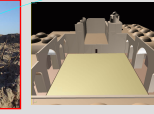
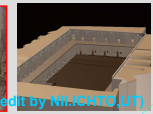


(photo credit by NII, ICHTO, UT)



(photo credit by NII, ICHTO, UT)

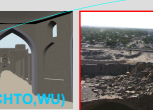
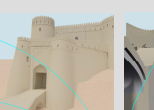
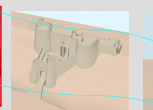
Sistani house



(photo credit by NII, ICHTO, UT)

(photo credit by NII, ICHTO, UT)

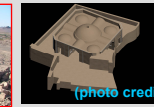
Barrack



(photo credit by NII, ICHTO, UT)

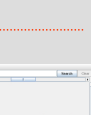
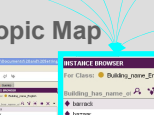
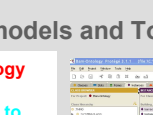
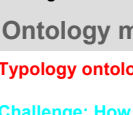
(photo credit by NII, ICHTO, UT)

Mosque



(photo credit by NII, ICHTO, UT)

Main gate and bazaar



4 season reception room

Ontology models and Topic Map

Typology ontology

Challenge: How to manage types?

Developing knowledge management of typology of citadel of Bam: Buildings and the name and the function corresponding to them Using past study on Ontology of caravanserai

