

## eSciDoc, Infrastructure and Solutions for eResearch and eScience

Malte Dreyer

This work is licensed under a Creative Commons Attribution 2.0 Germany License  
<http://creativecommons.org/licenses/by/2.0/de/>



## Repository Infrastructure

- Taking artifacts in the center of the design
- Dealing with Tradeoffs
  
- A Continuum
  - Archive -> Stable and longliving
  - Artifact Handling -> Enrichment and Fidelity of data
  - Working Environment -> Speed and Flexibility
  
- Could be solved by many specialized systems

M. Dreyer

17.09.2009

## eSciDoc

- A Repository Infrastructure
- An Infrastructure for Virtual Research Environments
- A Publication Infrastructure
- A Set of Services, Tools and Content Models
- An Archive
- A growing set of Solutions
  
- A Community project inviting others to participate

M. Dreyer

17.09.2009



M. Dreyer

17.09.2009

## Interested Parties, Prospects, and Partners

- |  |  |                                     |
|--|--|-------------------------------------|
| ▪ Bavarian State Library, Munich, Germany                                    | ▪ GBV, Göttingen, Germany  | ▪ Nihon University, Japan           |
| ▪ CNRS, France   | ▪ German Center for Geosciences, Potsdam, Germany                      | ▪ RWTH Aachen, Germany              |
| ▪ DANS, The Hague, Netherlands   | ▪ German National Library of Science and Technology, Hannover, Germany | ▪ University of Copenhagen, Denmark |
| ▪ Deutsches Archäologisches Institut, Berlin, Germany                        | ▪ Humboldt University Berlin, Germany                                  | ▪ University of Freiburg, Germany   |
| ▪ DTU, Lyngby, Denmark   | ▪ King's College, UK   | ▪ University of Heidelberg, Germany |
| ▪ FAO (Food and Agriculture Organization of the United Nations), Rome, Italy | ▪ National Institute for Materials Science, Japan                      | ▪ University of Minnesota, USA      |
|  |  | ▪ University of Stuttgart, Germany  |
|  |  | ▪ University of Tübingen, Germany   |

- All with quite different scenarios and data

## eSciDoc Infrastructure



## Infrastructure

```
<escidoc:item>
  <xsi:schemaLocation="http://www.esdoc.de/schema/esw/schema/0.1" xmlns:esdoc="http://www.esdoc.de/metadata/tatadataschema/0.1" type="article">
    <escidoc:item:properties xlink:type="simple" xlink:title="Properties" xlink:href="/ir/item/escidoc/67067/properties">
      <prop:creation-date>2009-06-08T08:37:149.973Z</prop:creation-date>
      <crel:created-by xlink:type="simple" xlink:title="Dovore, Annemarie" xlink:href="/aa/user-account/escidoc/53218"/>
      <prop:public-status>released</prop:public-status>
      <prop:public-status-comment></prop:public-status-comment>
      <crel:context xlink:type="simple" xlink:title="Latest Version" xlink:href="/ir/item/escidoc/67067/14">
        <version:number>4</version:number>
        <version:date>2009-06-08T08:32:30.559Z</version:date>
        <version:status>released</version:status>
        <version:comment></version:comment>
        <version:pid>hdl:icsehandle/test/escidoc/67067/4</version:pid>
      </crel:context>
      <prop:latest-version xlink:type="simple" xlink:title="Latest Version" xlink:href="/ir/item/escidoc/67067/14">
        <version:number>4</version:number>
        <version:date>2009-06-08T08:32:30.559Z</version:date>
        <prop:latest-version></prop:latest-version>
      <prop:release xlink:type="simple" xlink:title="Latest public version" xlink:href="/ir/item/escidoc/67067/14">
        <release:number>4</release:number>
        <release:date>2009-06-08T08:32:29.497Z</release:date>
      </prop:content-model-specific xmlns:prop="http://esdoc.de/core/01/properties">
        <local-tags>
          <local-tag>staffmeeting-2009-sept</local-tag>
        </local-tags>
      </prop:content-model-specific>
    </escidoc:item:properties>
    <escidoc:metadataRecords md=records>
      <xlink:type="simple" xlink:title="Metadata Records of Item escidoc:67067" xlink:href="/ir/item/escidoc/67067/md-records">
        <escidoc:metadataRecords md-record name="escidoc">
          <xlink:type="simple" xlink:title="escidoc" xlink:href="/ir/item/escidoc/67067/md-records/md-record/escidoc">
            <escidoc:metadataProfile:publication xmlns:escidoc:metadataProfile="http://esdoc.mpg.de/metadataprofile/schema/0.1/" type="article">
              <publication:creator xmlns:publication="http://esdoc.mpg.de/metadataprofile/schema/0.1/publication" role="author">
                <escidoc:person xmlns:escidoc="http://esdoc.mpg.de/metadataprofile/schema/0.1/types">
                  <escidoc:complete-name></escidoc:complete-name>
                  <escidoc:family-name>Warner</escidoc:family-name>
                  <escidoc:given-name>Natacha</escidoc:given-name>
                  <escidoc:organization>
                    <escidoc:organizational-unit-name>Department of Linguistics, University of Arizona, Tucson, Arizona</escidoc:organizational-unit-name>
                    <escidoc:address>85721 USA</escidoc:address>
                    <escidoc:identifier></escidoc:identifier>
                  </escidoc:organization>
                  <escidoc:organization>
                    <escidoc:organization-name>Language Comprehension Group, MPI for Psycholinguistics, Max Planck Society</escidoc:organization-name>
                    <escidoc:address>Humboldtstr. 6A</escidoc:address>
                    <escidoc:identifier>55203</escidoc:identifier>
                  </escidoc:organization>
                </escidoc:person>
              </publication:creator>
```

## Infrastructure /1: Fixed Purpose



[http://commons.wikimedia.org/wiki/File:DA\\_ph\\_dreveny\\_most01.jpg](http://commons.wikimedia.org/wiki/File:DA_ph_dreveny_most01.jpg) (CC-BY-SA 3.0)

## Infrastructure /2: More flexible

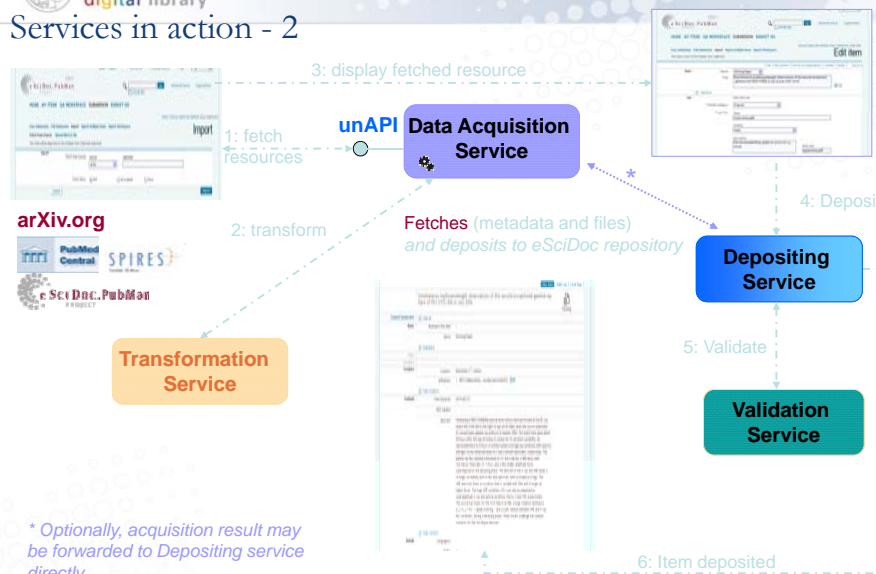


[http://commons.wikimedia.org/wiki/File:Wellington\\_infrastructure.jpg](http://commons.wikimedia.org/wiki/File:Wellington_infrastructure.jpg) (CC-BY 2.0)

## eSciDoc Architecture



## Services in action - 2



\* Optionally, acquisition result may be forwarded to Depositing service directly

## eSciDoc Scenarios Cloud





## Solutions Online /1



eSciDoc.PubMan  
PROJECT

[Einloggen](#)
[Über PubMan](#)
[Blog](#)
[Hilfe](#)
[Deutsch](#)

☐ Volltexte einbinden

[Erweiterte Suche](#)
[Organisationen](#)

STARTSEITE

ANSICHT: SORTIEREN

Bibliographische Datensätze

203 Datensätze

25 Treffer

☐ Mittlere Ansicht
 ☐ Cues to perform
 ☐ Clausal coordination

HOME

VIEW FILTERS

Status: All  
 Import: -  
 147 Items (0)

25 Items

☐ State

Pending



eSciDoc.PubMan  
PROJECT

[Test Depositor Library](#)
[Logout](#)
[Contact us](#)
[Policy&Disclaimer](#)

[Test Depositor Library](#)
[ログアウト](#)



eSciDoc.PubMan  
PROJECT

[ホーム](#)
[登録一覧](#)
[管理画面](#)
[新規登録](#)
[一時保存 \(0\)](#)

[一覧表示](#)
[絞り込み](#)
[ソート順変更](#)
[ファイル形式で保存](#)
[選択したアイテムを登録](#)

登録状況

All (except withdrawn)

-

147 件 (降順 ソート条件: 更新日)

25 件

[前へ](#)
[1](#)
[2](#)
[3](#)
[4](#)
[5](#)
[6](#)

登録状況

アイテムの表示項目を狭めます (詳細一覧)

☐

[AstroGrid-D: Enhancing Astronomic Science with Grid Technology](#)

依頼者

依頼日

資料題名

ファイル

作者

日付

学術論文

メール

Enke, Harry, Steinmetz, Matthias; Radermacher, Ralf

## Solutions /2

## Solutions and buildings blocks for ...

- Publications
  - Repository Matrix
- Images
- Digitized Textual Resources

Feature	R	eDoc	DSpace	EPiInfo	OPUS
Volume Report for Metadata <sup>37</sup>	+	+	+	+	+
Upload from existing eDoc	+	-	-	+	-
Import Records	Evaluate List of Sources Re-URL URL	List of Sources Re-URL eDoc URL	Re-URL URL eDoc URL	Re-URL URL eDoc URL METS METS	Re-URL
Fetch Metadata & Fulltext from	eDoc with Publisher Central Record Links Data	Acquire with Aggressive Record Retrieval Behavior	Acquire with Aggressive Record Retrieval Behavior	Acquire with Aggressive Record Retrieval Behavior	-
<b>SYSTEM MANAGEMENT</b>					
<b>5.1 Password Management</b>					
Lightweight Directory Access Protocol (LDAP) <sup>38</sup>	+	+	+	+	+
System assigned Passwords	-	-	+	+	-
User selected Passwords	-	-	-	-	-
Transfer Password Function <sup>39</sup>	+	+	+	+	+
<b>5.2 Content Submission Administration</b>					
Define multiple Collections within same Instance of System <sup>40</sup>	+	+	+	+	+
Set different Submission Parameters for each Collection <sup>41</sup>	+	+	+	+	+
<b>5.3 Submission Support</b>					
Email Notification for <sup>42</sup> <sup>43</sup>	-	-	Submitted Collection	Submitted Collection	Submitted Collection

### Selected Supported Protocols/Standards/Specifications

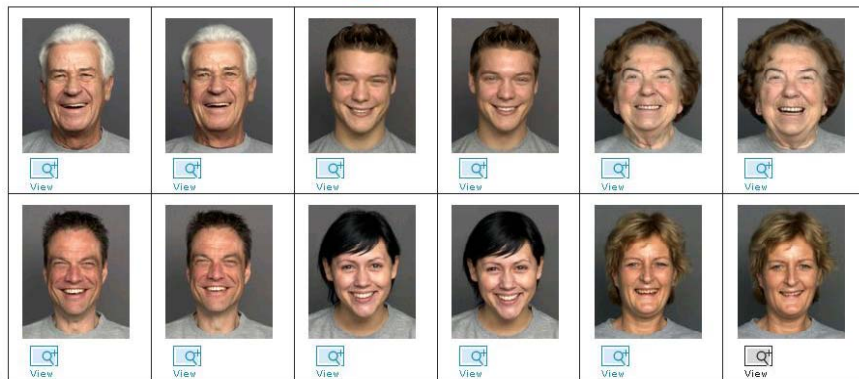


You searched in the the whole Faces Collection for (happiness)

Revise Search Show 12 of 12 hits Previous 1 Next

Go to page 1 of 1

Sorted by Emotion Person-ID Picture Set Sort



Revise Search Show 12 of 12 hits Previous 1 Next

Go to page 1 of 1

M. Dreyer

17.09.2009

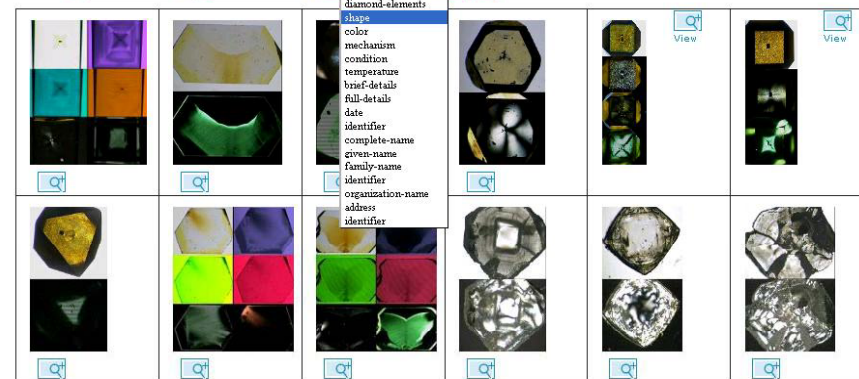
14 images to browse

Show 12 of 14 hits

Previous 1 2 Next

Go to page 1 of 2

Sorted by identifier organization-name shape Sort



Show 12 of 14 hits

Previous 1 2 Next

Go to page 1 of 2

M. Dreyer

17.09.2009

Home Create Album My Albums Published Albums Statistics

Browse

## Published Albums

Search in album list Search

Show 10 of 2 hits

Previous 1 Next

Go to page 1 of 1

Sorted by Date published

Name	Number of pictures	Description	Owner	Affiliation	Date published
Expression Research on Middle Aged Men	8	This album contains a selection of middle aged men with different facial expressions.	Kleinerfercher, Friederike	Max Planck Digital Library	2009-03-27 at 13:49:12 CET
DEMO FACES Collection	72	This is the FACES Collection of test-faces.mpg.de	Saquet, Bastien	MPDL	2009-03-27 at 13:14:17 CET

Show 10 of 2 hits

Previous 1 Next

Go to page 1 of 1

M. Dreyer

17.09.2009

## Beyond publication repositories

- Create a continuum of publication and research data
- Transfer the idea of publishing also to data
- Integrating data publications within an institutional repository
- Have data and their aggregations citable in a stable way
- Prepare the repository to know more about data specifics

M. Dreyer

17.09.2009

Thanks for your attention !